

C.T. Male Associates

Engineering, Surveying, Architecture, Landscape Architecture & Geology, D.P.C.

*A multi-discipline firm providing
single-source responsibility
for all your
Essential Facility needs*



WWW.CTMALE.COM

Building Systems Approach

**Our professionals view each building
not as a set of isolated components,
but as an integrated unit.**

**This philosophy is reflected in the way
we approach each and every new project.**

Single Source Responsibility



Architecture



Land Development



Construction Administration



Survey



Environmental
Asbestos
ESA SEQR



Civil Engineering



Building Systems



Structural



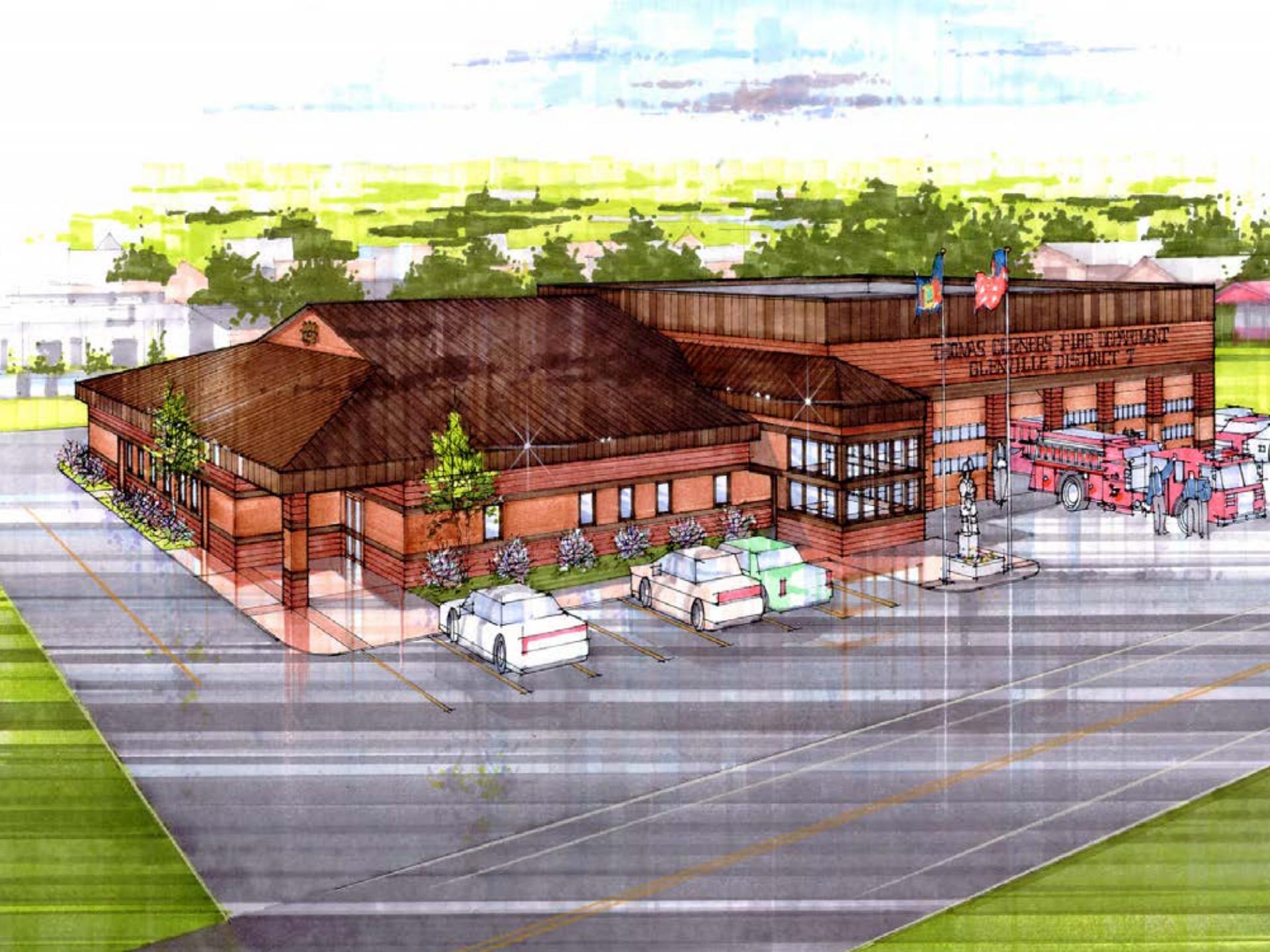
Mechanical



Electrical



EXISTING BUILDING















EXIT













HONOR ROLL

New York's Fully Sprinklered Fire Stations

Thomas Corners Fire Department – Schenectady County

The new, fully sprinklered, Thomas Corners Fire Station was recently commissioned. The new 18,000 square foot facility replaces a much smaller building initially built in 1949 on the same site. The original station was significantly modified in 1956, and again in 1967, to provide more space to deal with an increasing number of alarms. The new state-of-the-art fire station, designed by CT Male Associates, P.C. of Latham, N.Y., features six apparatus bays and ample administrative space to support the day-to-day operations of this all-volunteer fire department.

Other significant features of the station include a diesel powered 175-kw emergency generator capable of powering the entire facility during power outages, EMS and firefighting supply rooms, a decontamination/wet storage room, a large training room that can be divided into two smaller rooms for flexibility, staff offices, a communications room, an exercise room, a members' recreation room, a kitchen, a mezzanine along with several storage rooms, and a compressor/workshop area for charging SCBAs and accomplishing minor repairs. The communications room was designed to provide visual access to the apparatus bays, as well as the front apron and a busy traffic intersection adjacent to the station and the Schenectady County Airport. The apparatus bays are heated by means of a hot water radiant

slab. In addition, a grant was received from the New York State Energy Research and Development Authority in recognition of



the many energy-saving features included in the design of the new station.

Thomas Corners Fire Department serves Fire District 7 in the town of Glenville, which covers approximately six square miles with a population of approximately 7,000 residents. The department has 49 active members and its fleet consists of three engines, one with heavy rescue capability, an SUV fitted-out as an EMS vehicle, a utility pick-up truck, and three chief's vehicles.

By Commissioner Joe Homer

Facility Support Services

- Existing Condition Assessments
- Structural Evaluations
- Exterior Building Survey
- Interior Building Survey
- Inventory Building Assets
- Mechanical & Electrical Systems Survey
- Energy Operating Cost Evaluation
- Generator Installation Services
- Code Compliance Review
- Fire Protection Analysis
- Record Document Evaluation

NISKAYUNA FIRE COMPANY

DISTRICT NO. 2





EPOXY FLOORING SYSTEM



REPAIRS & RENOVATIONS



MECHANICAL SYSTEM UPGRADES

Rehabilitation Services

- Existing Building Evaluations
- Roof Replacement
- Moisture Infiltration Analysis
- Building System Repairs
- Asbestos Survey and Sampling Services
- Mechanical & Electrical System Upgrades
- Energy Operating Cost Evaluation
- Accessibility Improvements
- Building Additions
- Interior Renovations
- As-Built Documentation



EXTERIOR ALTERATIONS - BEFORE



EXTERIOR ALTERATIONS - AFTER



EXTERIOR ALTERATIONS - BEFORE



EXTERIOR ALTERATIONS - AFTER



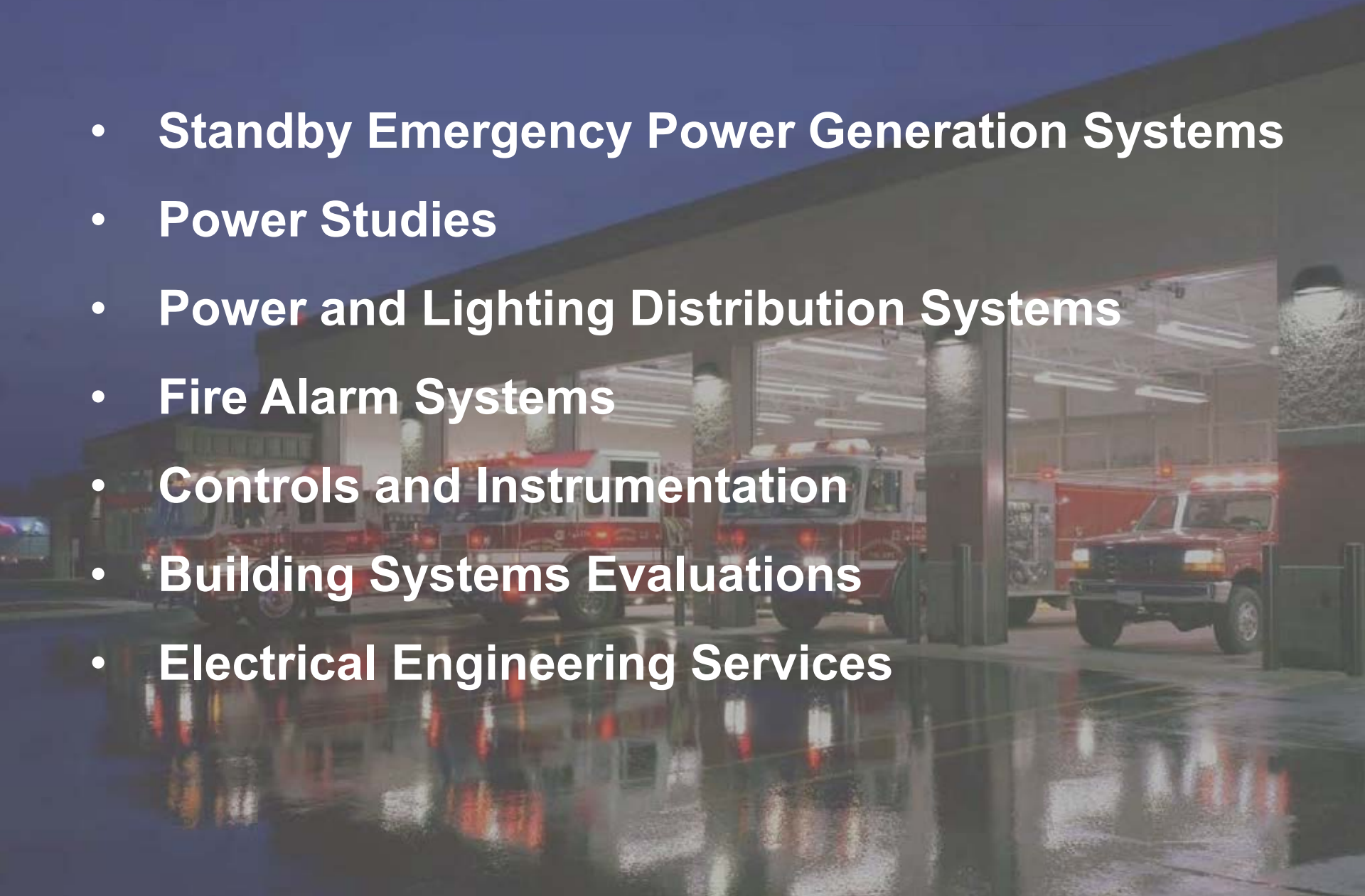
EXISTING BUILDING

1 COPAKE FIRE CO. 1



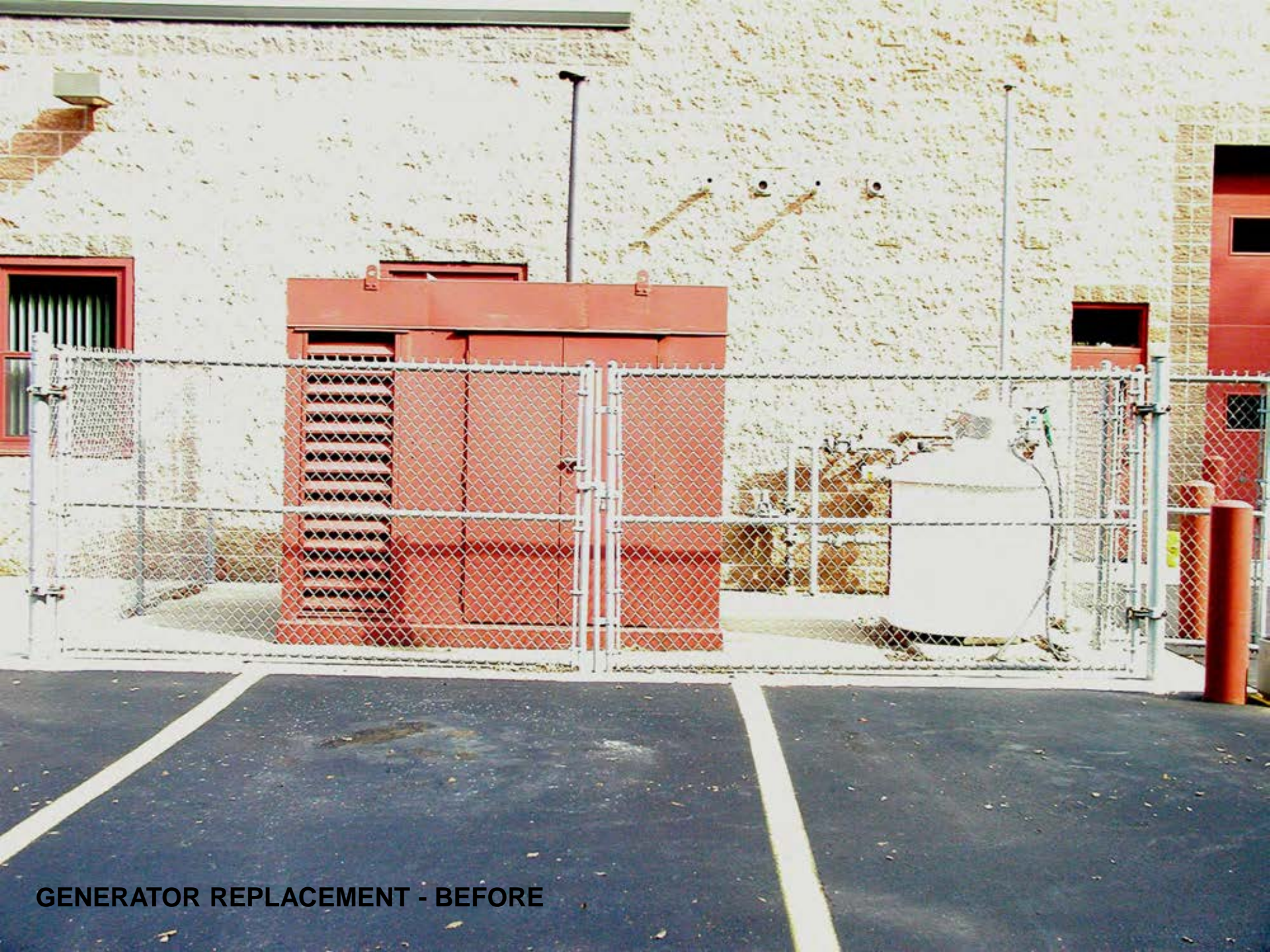
Generator Systems

- **Standby Emergency Power Generation Systems**
- **Power Studies**
- **Power and Lighting Distribution Systems**
- **Fire Alarm Systems**
- **Controls and Instrumentation**
- **Building Systems Evaluations**
- **Electrical Engineering Services**





GENERATOR REPLACEMENT



GENERATOR REPLACEMENT - BEFORE



GENERATOR REPLACEMENT - AFTER

PV System Services

- Photovoltaic Power-Producing Systems
- On-Site Renewable Energy Resources
- Power Purchase Agreements
- Partnership With New York Light Energy
- NYSERDA Incentive Applications
- Electrical Design
- Structural Evaluations
- Solar Panel Layouts
- Public Bidding Requirements





01/19/2012

PV SYSTEM INSTALLATION



01/19/2012

PV SYSTEM INSTALLATION



PV SYSTEM INSTALLTION - INVERTER

Site Planning & Evaluation

- **Boundary & Topographic Surveys**
- **Flood Plain Analysis**
- **Geotechnical Evaluations**
- **Stormwater Management Planning**
- **Environmental Site Assessments**
- **Planning Board Applications**
- **Grading and Drainage Design**
- **Pavement Management**
- **On- and Off-site Utility Engineering**
- **Geographic Information Systems Mapping**



EXISTING FACILITY EVALUATION





Construction Administration

- Public Works Contract Administration
- Construction Observation
- Special Inspections
- Shop Drawing and Submittal Review
- Project Meeting Coordination
- Certification of Payments to Contractors
- Claim and Dispute Resolution
- Record Drawing Services
- Change Order Preparation
- Project Close-out Services
- Commissioning Services





C.T. Male Associates, D.P.C.

Westmere Fire District
Ground Breaking Ceremony
March 29, 2011



Westmere Fire District

Westmere Fire District



Westmere Fire District









1741
WESTERN AVENUE


WESTERN
FIRE DISTRICT

2011

06/07/2013





EXIT

2013/11/18



2013/11/18



2013/11/18



2013/11/18



01/07/2013



WESTMERE

FIRE - RESCUE

549

TOWN OF SULLYLAND

WESTMERE
FIRE DISTRICT

01/07/2013



06/17/2013

Construction
Administration



Land
Development



Architecture



Survey



Environmental

Asbestos
ESA SEQR



Civil
Engineering



Building
Systems



Structural



Mechanical



Electrical





07/19/2012 11:57

STORAGE BUILDING



STORAGE BUILDING



STORAGE BUILDING

Environmental Services

- **Brownfield Environmental Restoration Program**
- **Brownfield Opportunity Grant Applications**
- **Environmental Site Assessments**
- **Asbestos Containing Material Surveys**
- **Abatement Design and Monitoring**
- **Wetland Delineations**
- **Environmental Impact Statements**
- **SEQRA Review**
- **Adirondack Park Agency Land Use**
- **NYS Empire Zone Applications**



BROWNFIELD PROJECT



New York State
Department of Environmental
Conservation

Division of
Environmental Remediation

Schuyler Heights
Fire District

DEC Site No.: E4-01-050

FIGURE 2

Site Boundary

Map Details

Created in ArcMap 9.2

Date of Last
Revision: 10.01.2007

UNAUTHORIZED DUPLICATION
IS A VIOLATION OF
APPLICABLE LAWS



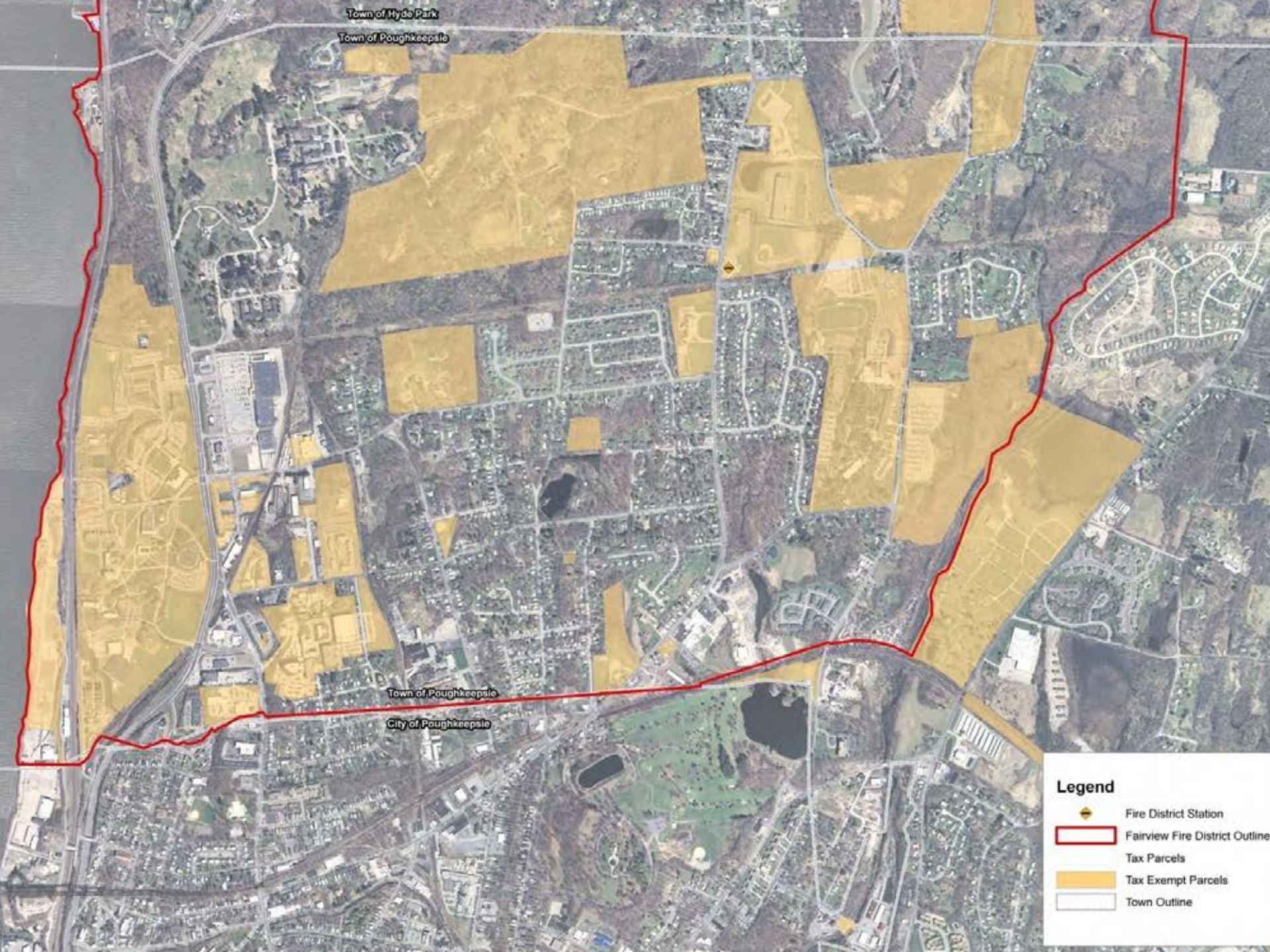
North American Datum 1983
UTM Zone 18

Land Surveying

- **Boundary Surveys**
- **Topographic Surveys**
- **Right-of-Way and Easement Surveys**
- **Engineering and Architectural Surveys**
- **Construction Stakeout**
- **Global Positioning System (GPS) Technology**
- **Wetlands Surveys**

Master Planning Services



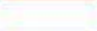


- **Building Services and Systems**
- **Fire Apparatus Evaluation**
- **Fire Station Location Analysis**
- **Fire Apparatus Response Patterns**
- **Fire Apparatus Access Road Requirements**
- **Comprehensive Master Plan Development**
- **Municipal Planning and Zoning Board Review**
- **Demographic Studies and Analysis**
- **Land Use Regulations**
- **Grant Writing and Fund Development**

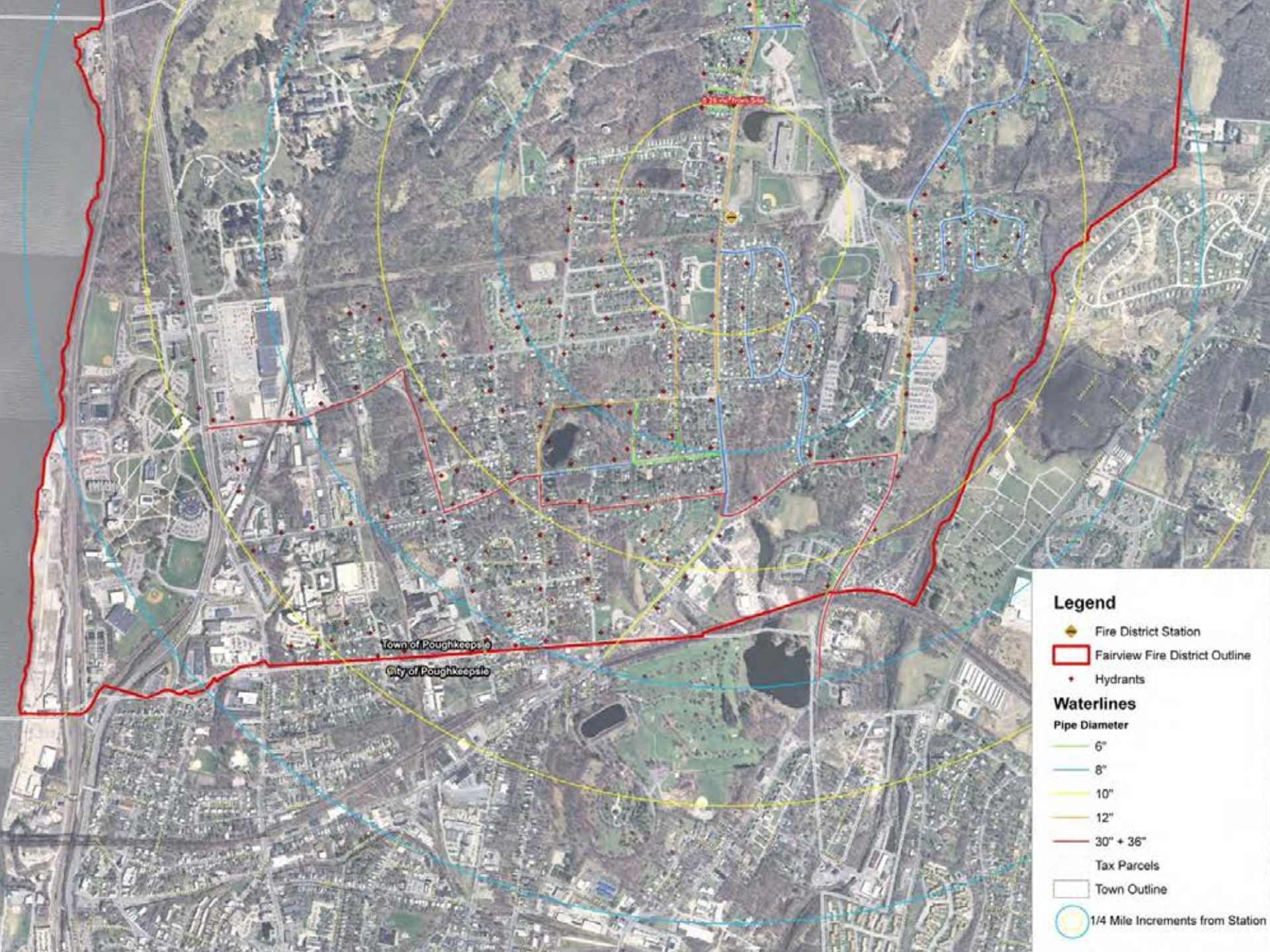


Town of Hyde Park
Town of Poughkeepsie

Town of Poughkeepsie
City of Poughkeepsie

Legend

-  Fire District Station
-  Fairview Fire District Outline
-  Tax Parcels
-  Tax Exempt Parcels
-  Town Outline



Legend

- Fire District Station
- Fairview Fire District Outline
- Hydrants

Waterlines

Pipe Diameter

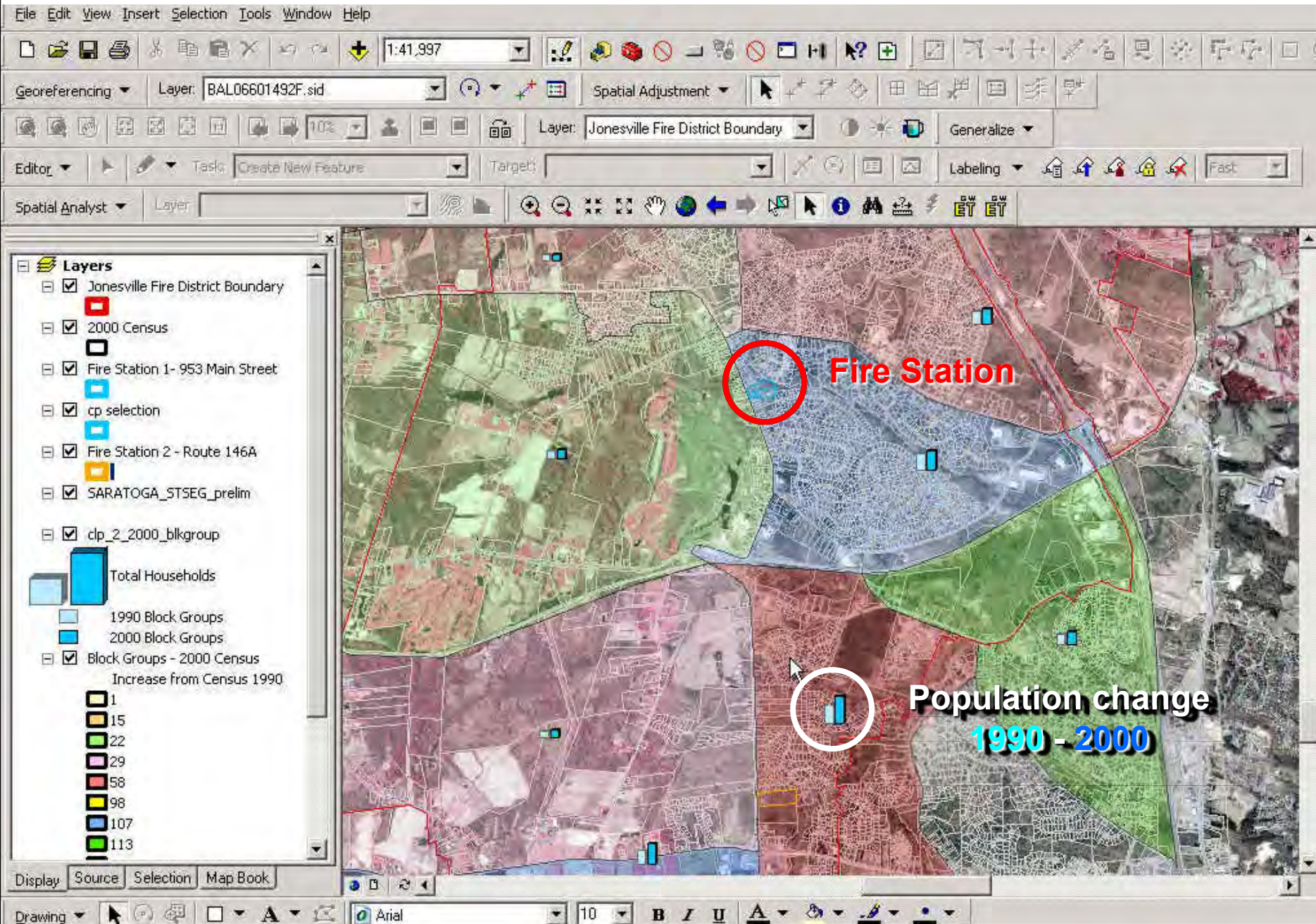
- 6"
- 8"
- 10"
- 12"
- 30" + 36"

Tax Parcels

Town Outline

1/4 Mile Increments from Station

GIS Project Showing Population Growth, 1990 – 2000, for Jonesville FD



Design Services

- Pre-Design Services
- Architectural Design
- Structural Engineering
- Mechanical-Electrical-Plumbing Engineering
- Materials Research/Specifications
- Bidding & Negotiation Services
- Contract Administration Services
- Renovations and Alterations
- Bond Referendum Support Services
- Energy Certification Program
- Disaster Assistance

Architecture

Land
Development

Survey

Environmental

Asbestos

ESA

SEQR

Construction
Administration



Civil
Engineering



Building
Systems



Structural



Mechanical



Electrical







COEYMAN'S FIRE COMPANY NO. 1









COEYMAN'S FIRE COMPANY NO. 1





HONOR ROLL

New York's Fully Sprinklered Fire Stations

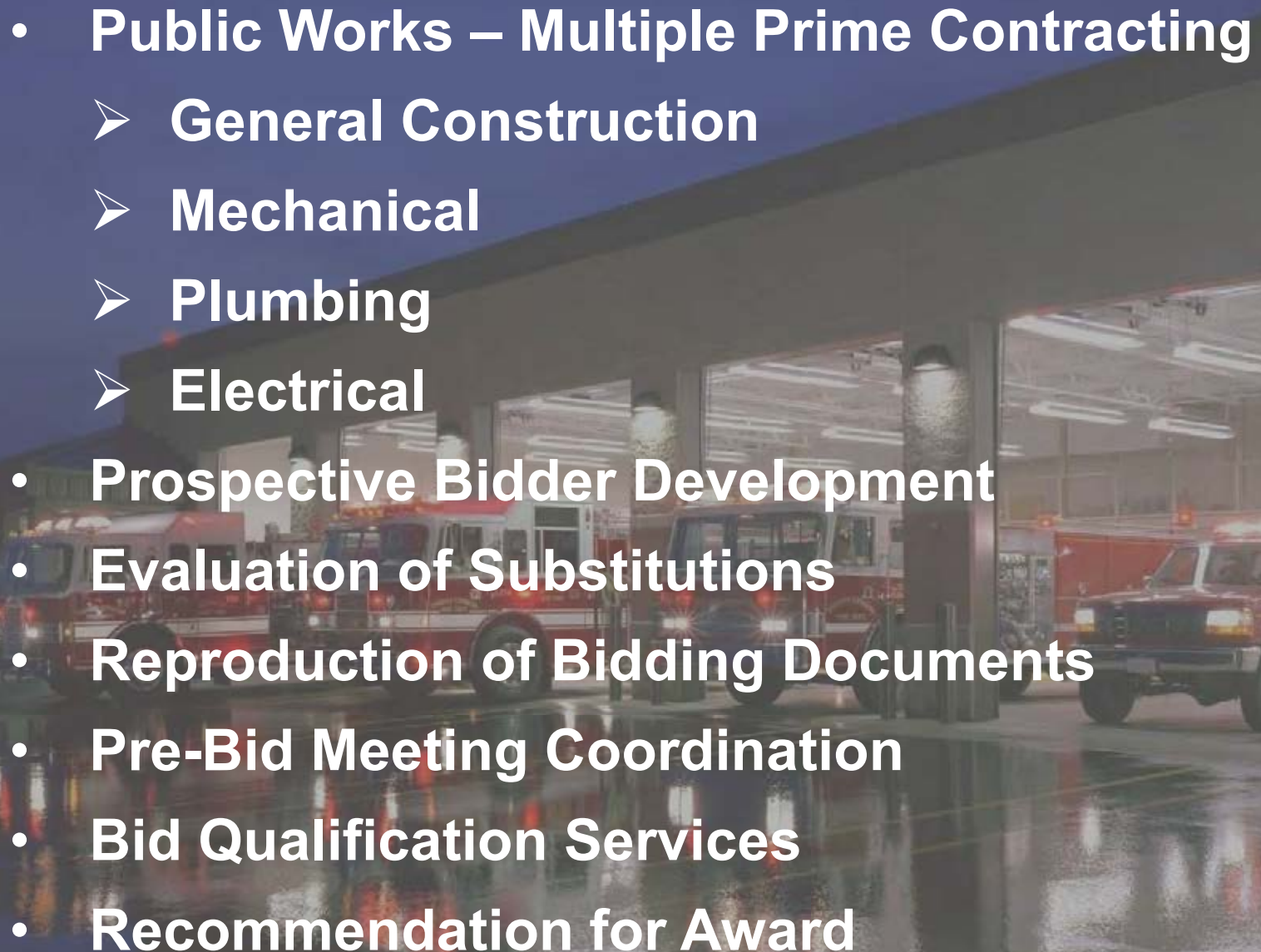
Coeymans Fire Company #1 - Albany County

The Coeymans Fire Company #1 recently moved into its new fire station located at 67 Church Street in the town of Coeymans. The approximately 12,000-square foot facility, which was designed by CT Male Associates, P.C., replaces a 4,500-square foot, 3-bay structure that had been built in 1959. The new facility was designed to meet the current and future needs of the Coeymans Fire District, incorporating the latest building requirements for fire stations, which are considered essential facilities within the code. The site for the new station is centrally located within the district, providing quick response via three access roads that intersect adjacent to the station. Features of the new fire station include three double apparatus bays (one drive through), an office suite for district and company officers, a conference room, meeting facilities for 118 people, commercial kitchen, mezzanine storage area, records retention room, breathing air compressor room, decon room, workshop, radio room, and members room. The building infrastructure includes wet and dry sprinkler systems, radiant slab heating, air conditioning, stand-by generator, apparatus water fill stations, and wireless Internet access.



Courtesy of Commissioner William A. Bruno
Photo © David Lamb Photography

Construction Procurement

- **Public Works – Multiple Prime Contracting**
 - **General Construction**
 - **Mechanical**
 - **Plumbing**
 - **Electrical**
 - **Prospective Bidder Development**
 - **Evaluation of Substitutions**
 - **Reproduction of Bidding Documents**
 - **Pre-Bid Meeting Coordination**
 - **Bid Qualification Services**
 - **Recommendation for Award**
- 



PROPOSED RENDERING



COHOES FIRE DEPARTMENT

RAYMOND K. LA MORA ISLAND STATION







PROPOSED RENDERING







ELSMERE FIRE DISTRICT
SOUTH STATION

578



ELSMERE FIRE DISTRICT
SOUTH STATION

578











ELSMERE FIRE DISTRICT
SOUTH STATION

578



Emergency Operation Centers

In an emergency we look to our first responders to protect and serve our communities when arriving on the scene of an accident, natural or man-made disaster, or similar event.

**We are in the protection and prevention business.
Our job is to protect public health and safety.**

Our work as First Preventers is not well known because we're working behind the scenes to make sure accidents don't happen and that facilities comply with the Codes of New York State.







MONTGOMERY COUNTY PUBLIC SAFETY FACILITY EXPANSION

EMERGENCY SERVICES, PROBATION & PUBLIC DEFENDER DEPARTMENTS ADDITION
200 CLARK DRIVE, FULTONVILLE, NEW YORK
COUNTY EXECUTIVE: MATTHEW L. OSSENFORT

ARCHITECT/ENGINEER

C.I. Mole Associates

1000 West 10th Street, Suite 100, Fultonville, NY 12034

TEL: 518-465-1111 FAX: 518-465-1112 WWW.CIMOLE.COM



CONSTRUCTION MANAGER

WANDORF ASSOCIATES, INC.
500 3RD AVENUE EXTENSION
EAST GREENWICH, NEW YORK 12243
TELEPHONE: (518) 439-2222



GENERAL CONTRACTOR

Tuner Construction Company

1 Cambridge Drive South, Albany, New York 12208

518-462-0771

MECHANICAL CONTRACTOR

Campbell Plumbing & Heating, Inc.

100 New 34th Street, Larchmont, New York 10538

914-836-0014

PLUMBING CONTRACTOR

Adkins Plumbing & Heating, Inc.

63 Elmwood Avenue, Larchmont, New York 10534

914-836-2577

ELECTRICAL CONTRACTOR

Burnham Electric, Inc.

700 Townsend Street, Troy, New York 12182, 518-279-8998



07/1



myEMAapp.com

Montgomery County EMO
Jeffery T. Smith, Director

Features:

- Alerts
- Maps
- Reports
- More

10/2



2016/11/03



THE LUCILLE SITTERLY WING
AT THE
MONTGOMERY COUNTY
PUBLIC SAFETY FACILITY

PROBATION DIRECTOR LUCILLE SITTERLY
HAS LEFT A LASTING MARK ON
MONTGOMERY COUNTY AS AN IMPORTANT
MEMBER OF THE COUNTY LEADERSHIP TEAM
AND A RESPECTED LEADER IN THE
COMMUNITY. THE COUNTY OF MONTGOMERY SHOWS
GRATEFUL RECOGNITION FOR THE
DEDICATED SERVICE AND COMMITMENT
DIRECTOR SITTERLY HAS PROVIDED TO THE
RESIDENTS OF THIS COUNTY BY MAKING HER
NAME A PERMANENT PART OF THIS
PUBLIC SAFETY FACILITY.

-2016-





Your First Preventers

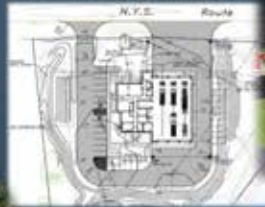
In an emergency we look to our first responders to protect and serve our communities when arriving on the scene of an accident, natural or man-made disaster, or similar event.

**We are in the protection and prevention business.
Our job is to protect public health and safety.**

Our work as First Preventers is not well known because we're working behind the scenes to make sure accidents don't happen and that facilities comply with the Codes of New York State.

Architecture

Land
Development



Survey



Environmental

Asbestos
ESA SEQR



Construction
Administration



Civil
Engineering



Building
Systems



Structural



Mechanical



Electrical







WILTON FIRE DISTRICT





06/11/2012

Wilton Fire District







WILTON

WILTON
VOL.
FIRE DEPT.

ETA-715

WILTON
FIRE DIST.







06/11/2012 1



06/11/2012



WILTON FIRE DISTRICT

4323





C.T. Male Associates



NFBA
NATIONAL FRAME BUILDING ASSOCIATION

Congratulations to the **Wilton Fire District Station 2** for being selected as the 2012 Building of the Year by the **National Frame Building Association!**



Wilton Fire District Training Tower



FIRE FACILITIES

STEEL FIRE TRAINING TOWERS

Wilton Fire District Training Tower



FIRE FACILITIES

STEEL FIRE TRAINING TOWERS

Wilton Fire District Training Tower



FIRE FACILITIES

STEEL FIRE TRAINING TOWERS

Wilton Fire District Training Tower



FIRE FACILITIES

STEEL FIRE TRAINING TOWERS

Starting Soon

Village of Cambridge Fire Department



CONCEPT RENDERING

Village of Cambridge Fire Department



If you build it – they will come

C.T. Male



C.T. Male Associates



**Civil Engineering – Environmental Services – Survey Services – Land Services
Architecture – Energy & Building Systems Services – Electrical Engineering**

C.T. Male Associates

Corporate Headquarters:

50 Century Hill Drive

Latham, NY 12110

518.786.7400 800.700.3536

**Civil Engineering – Environmental Services – Survey Services – Land Services
Architecture – Energy & Building Systems Services – Electrical Engineering**

C.T. Male Associates

Syracuse Office:

**200 Gateway Park Drive
Syracuse, NY
315.458.6498**

**Civil Engineering – Environmental Services – Survey Services – Land Services
Architecture – Energy & Building Systems Services – Electrical Engineering**

C.T. Male Associates

Johnstown Office:
5 West Main Street
Johnstown, NY 12801
518.848.3533

Civil Engineering – Environmental Services – Survey Services – Land Services
Architecture – Energy & Building Systems Services – Electrical Engineering

C.T. Male Associates

Glens Falls Office:

One Broad Street Plaza

Glens Falls, NY 12801

518.832.6746

**Civil Engineering – Environmental Services – Survey Services – Land Services
Architecture – Energy & Building Systems Services – Electrical Engineering**

C.T. Male Associates

Poughkeepsie Office:

12 Raymond Avenue

Poughkeepsie, NY 12603

845.454.4400

Civil Engineering – Environmental Services – Survey Services – Land Services

Architecture – Energy & Building Systems Services – Electrical Engineering

C.T. Male Associates

Red Hook Office:

7466 South Broadway

Red Hook, NY 12571

845.835.8237

**Civil Engineering – Environmental Services – Survey Services – Land Services
Architecture – Energy & Building Systems Services – Electrical Engineering**

C.T. Male Associates

Cobleskill Office:

**2668 State Route 7
Cobleskill, NY 12043
518.826.4040**

**Civil Engineering – Environmental Services – Survey Services – Land Services
Architecture – Energy & Building Systems Services – Electrical Engineering**

C.T. Male Associates

Visit us on the web
www.ctmale.com

**Civil Engineering – Environmental Services – Survey Services – Land Services
Architecture – Energy & Building Systems Services – Electrical Engineering**